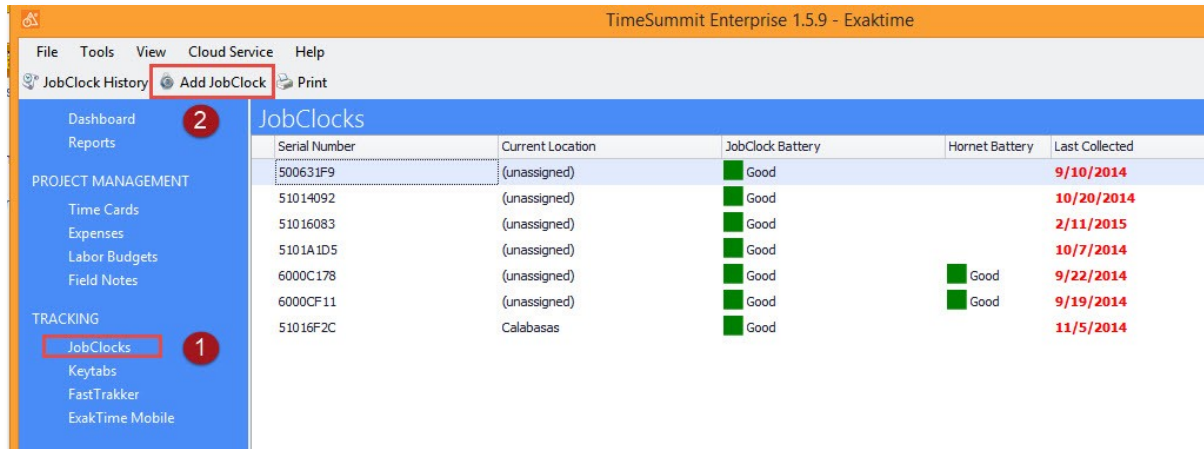


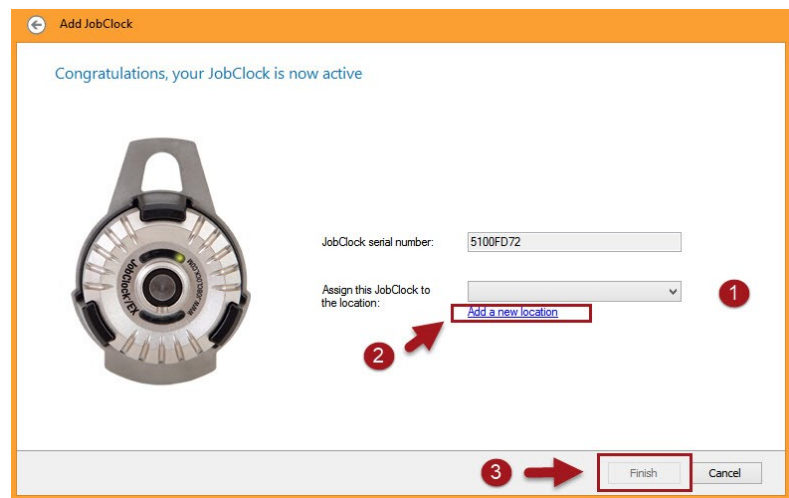
Note: If you have not created a jobsite for this new JobClock, go to “Locations” in the left navigation bar and then click **Add Location** in the upper left corner of the screen.

Adding JobClocks to your system is easy to do.



1. To assign your new JobClock to this site, choose **JobClocks** from the left navigation bar.
2. Click **Add JobClock** on the toolbar.

1. Enter the serial number from the back of the JobClock in the Serial Number field, then click **Next**.
2. On the next screen, using the drop-down menu, select the Location you will be assigning it to, or click **Add a New Location** just under the field. Click **Finish**.
3. The JobClock is almost ready to use..



**But first you must set the date and time on the JobClock before using it.**

Collect records from the Jobclock using your Android, BlackBerry, or FastTrakker Pro.

This will set the date and time on the JobClock. You should do this before touching any Keytabs to the JobClock.

Now the JobClock is ready to use!